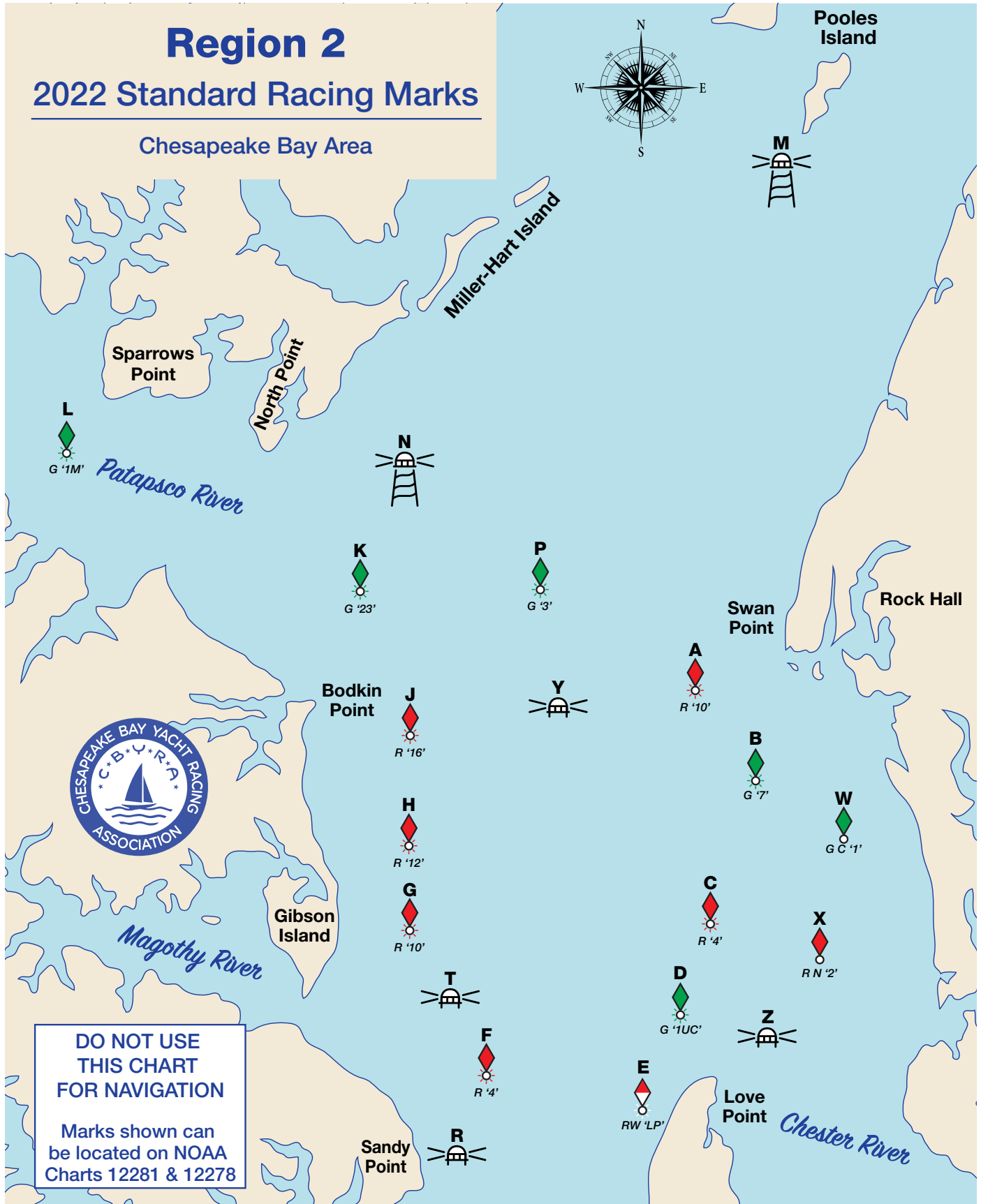


Region 2

2022 Standard Racing Marks

Chesapeake Bay Area



Approximate positions of all marks are offered as a reference only. Government symbols and/or numbers may be changed. All changes are published in Notice to Mariners. Description and location of bouys have been updated through 01/25/2022.

ALERT! Rocky shoals not shown on NOAA charts have been reported close to Marks M and N.

Region 2 – 2022 Standard Racing Marks

Mark	Govt. ID	Characteristics	Location	Lat 39 N	Lon 76 W
A	R "10"	Q R	Upper Chesapeake Channel - Lighted Buoy 10	8.38	19.36
B	G "7"	FI G 6s	Upper Chesapeake Channel - Lighted Buoy 7	6.59	18.29
C	R "4"	Q R	Upper Chesapeake Channel - Lighted Buoy 4	5.65	17.89
D	G "1UC"	FI G 4s	Upper Chesapeake Channel - Lighted Buoy 1UC	4.81	18.86
E	RW "LP"	Mo (A) W	Upper Chesapeake Channel - Lighted Buoy LP	2.58	20.76
F	R "4"	FI R 4s	Craighill Channel - Lighted Buoy 4	2.26	22.83
G	R "10"	FI R 2.5s	Craighill Channel - Lighted Buoy 10	4.46	23.57
H	R "12"	FI R 4s	Craighill Channel - Lighted Buoy 12	5.18	23.57
J	R "16"	FI R 6s	Craighill Channel - Lighted Buoy 16	6.99	23.57
K	G "23"	FI G 4s	Craighill Channel - Lighted Buoy 23	9.33	25.12
L	G "1M"	Q G	Fort McHenry Channel - Lighted Buoy 1M	12.05	30.78
M	Fixed Lt	FI W 2.5s, 27ft	Pooles Island Bar Light	15.71	16.68
N	Fixed Lt	FI W 2.5s, 22ft	Craighill Channel - RANGE FRONT LIGHT	11.32	23.66
P	G "3"	FI G 4s	Bewerton Channel - Lighted Buoy 3	9.14	21.14
R	Fixed Lt	FI 6s 51ft 9M	Sandy Point Light	0.94	23.09
T	Fixed Lt	FI 2.5s 52ft	Craighill Channel - BALTIMORE LIGHT	3.55	23.94
U	RC Choice	Inflatable Drop	May be set by RC as Starting Line		
V	RC Choice	Inflatable Drop	May be set by RC as 1 mark on course		
W	GC "1"		Swan Creek - Entrance Buoy 1	5.57	15.25
X	RN "2"		Chester River - Entrance Buoy 2	4.03	16.34
Y	Fixed Lt	Iso W 6s, 89ft	Brewerton Channel - Tolchester Channel Range Rear Light	7.41	20.94
Z	Fixed Lt	FI w 6s, 31FT	Upper Chesapeake Channel - Love Point Light	3.42	17.02
PP	GC "11"	FI R 4s	Fort McHenry Channel - Buoy 11	14.39	33.26

Distance Between Marks

Use the table below to determine the distance in nautical miles between marks. If a distance is not shown, the course between those marks most likely crosses land and/or a shoal and should not be used.

	B	C	D	E	F	G	H	J	K	L	M	P	W	X	Y	Z
A	1.97	2.96	3.59	5.90	6.69	5.11	4.58	3.55	4.57	9.59	7.62	1.58	4.25	4.94	1.56	5.29
B		0.99	1.84	4.45	5.59	4.62	4.34	4.12	5.97	11.13	9.21	3.38	2.57	2.98	2.22	3.32
C			1.13	3.80	5.12	4.57	4.44	4.61	6.71	11.88	10.11	4.31	2.05	2.02	2.95	2.33
D				2.68	4.00	3.68	3.68	4.26	6.64	11.75	11.04	4.68	2.91	2.11	3.06	1.99
E					1.64	2.88	3.40	4.92	7.56	12.26	13.51	6.57	5.22	3.73	4.84	3.03
F						2.28	2.98	4.77	7.29	11.58	14.28	7.01	6.76	5.35	5.36	4.66
G							0.72	2.53	5.02		12.46	5.05	6.56	5.63	3.59	5.19
H								1.81	4.32		11.82	4.39	6.47	5.73	3.02	5.38
J									2.63	7.55	10.23	2.86	6.62	6.35	2.08	6.22
K										5.17	9.14	3.09	8.54	8.64	3.77	8.63
L												8.02	13.69	13.79	8.94	13.74
P													5.80	6.33	1.74	6.56
W														1.76	4.79	2.55
X															4.92	0.81
Y																5.02