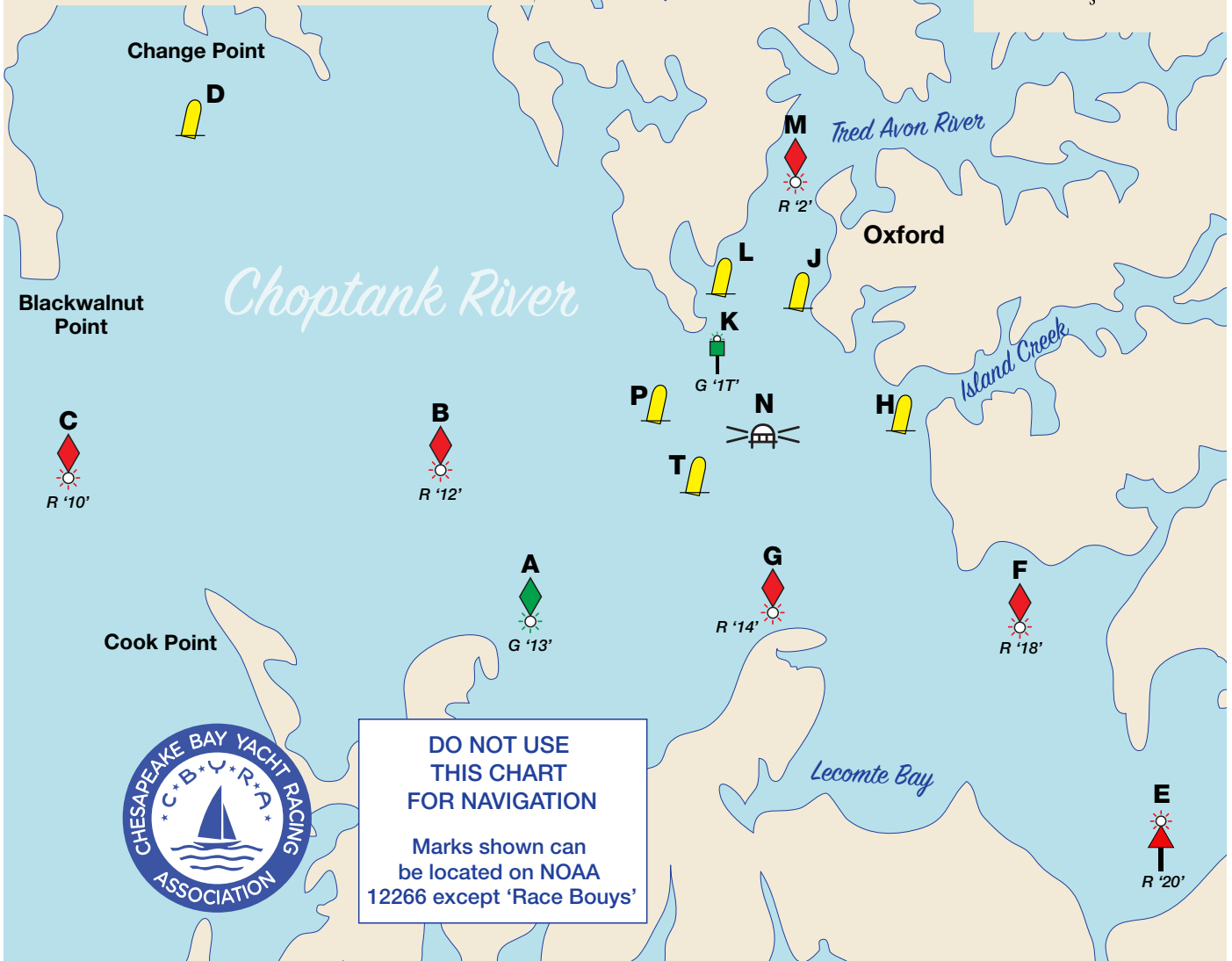
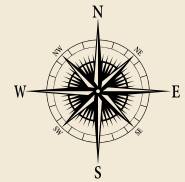


# Region 3 2022 Standard Racing Marks

Choptank River Area



**DO NOT USE  
THIS CHART  
FOR NAVIGATION**

Marks shown can  
be located on NOAA  
12266 except 'Race Bouys'



Approximate positions of all marks are offered as a reference only. Government symbols and/or numbers may be changed. All changes are published in Notice to Mariners. Description and location of bouys have been updated through 12/10/2021.

# Region 3 – 2022 Standard Racing Marks

(Choptank River area)

Mark	Govt. ID	Characteristics	Location	Lat 38 N	Lon 76 W
A	G "13"	FI G 2.5s	Choptank River - Lighted Buoy 13	38.53	12.51
B	R "12"	Q R	Choptank River - Lighted Buoy 12	39.22	13.83
C	R "10"	FI R 2.5s	Choptank River - Lighted Buoy 10	38.89	18.31
D			Race buoy 1mi S of Change Point		
E	TR "20"	FI R 4s, 15ft	Choptank River - CHANNEL LIGHT 20	36.01	6.88
F	R "18"	FI R 2.5s	Choptank River - Lighted Buoy 18	37.90	8.17
G	R "14"	FI R 2.5s	Choptank River - Lighted Buoy 14	38.55	10.69
H			Race Buoy off Island Creek Entrance	38.99	10.38
J			Race Buoy off Bachelor Point		
K	SG "1T"	FI G 2.5s	Tred Avon River - LIGHT 1T	39.89	11.31
L			Race Buoy off Fox Hole Creek Entrance		
M	R "2"	FI R 4s	Tred Avon River - Lighted Buoy 2	41.61	10.72
N	Fixed	FI W 4s, 35ft	Choptank River - LIGHT	39.35	11.07
P			Race Buoy WSW Choptank River Light		
T			Race Buoy WSW Choptank River Light		
U	RC Choice	Inflatable drop	May be set by RC at Starting Line		
V	RC Choice	Inflatable drop	May be set by RC as 1st windmark mark		
Y	RC Choice	Inflatable drop	May be set by RC as 1st leeward mark		

## Distance Between Marks

Use the table below to determine the distance in nautical miles between marks. If a distance is not shown, the course between those marks most likely crosses land and/or a shoal and should not be used.

	B	C	D	E	F	G	H	J	K	L	M	N	P	T
A	1.24	4.55			3.45	1.42			1.65		3.38	1.39		
B		3.52		6.31	4.62	2.54			2.08			2.16		
C					7.99	5.97	6.20		5.56			5.68		
D					2.14	3.92			5.20			4.68		
F						2.07			3.16			2.69		
G									1.43		3.06	0.85		
H											1.78	0.57		
L												1.77		