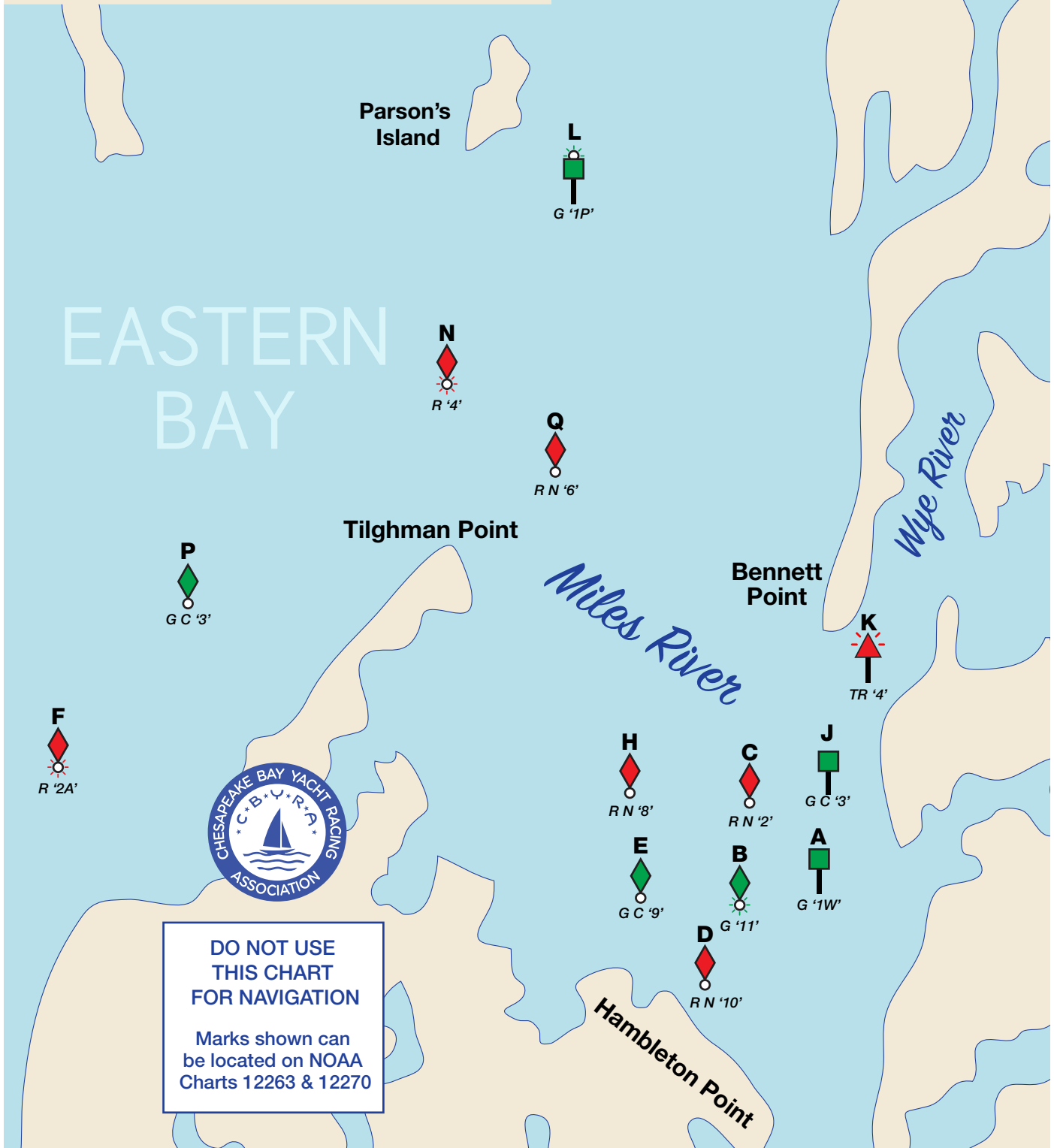
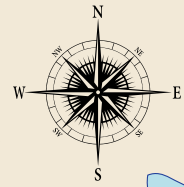


Region 3

2022 Standard Racing Marks

Eastern Bay & Miles River Area



Approximate positions of all marks are offered as a reference only. Government symbols and/or numbers may be changed. All changes are published in Notice to Mariners. Description and location of bouys have been updated through 12/07/2021.

Region 3 – 2022 Standard Racing Marks (Eastern Bay & Miles River area)

Mark	Govt. ID	Characteristics	Location	Lat 38 N	Lon 76 W
A	SG "1W"	FI G 2.5s	Wye River - Light 1W	49.97	12.63
B	G "11"	FI G 4s	Eastern Bay - Lighted Buoy 11	49.81	13.18
D	RN "10"		Eastern Bay - Buoy 10	49.59	13.26
E	GC "9"		Eastern Bay - Buoy 9	49.89	13.75
F	R "2A"	FI R 4s	Eastern Bay - Lighted Buoy 2A	50.56	18.22
H	RN "8"		Eastern Bay - Buoy 8	50.55	13.84
J	SG "3"		Wye River - Daybeacon 3	50.56	12.47
K	TR "4"	FI R 2.5s	Wye River - Light 4	50.82	12.05
L	SG "1P"	FI G 4s	Prospect Bay - Light 1P	54.03	13.80
N	R "4"	FI R 4s	Eastern Bay - Lighted Buoy 4	52.59	15.08
P	GC "3"		Eastern Bay - Buoy 3	51.67	16.95
Q	RN "6"		Eastern Bay - Buoy 6	52.29	14.75
U	RC Choice	Inflatable drop	May be set by RC at Starting Line		
V	RC Choise	Inflatable drop	May be set by RC as 1st windward mark		

Distance Between Marks

Use the table below to determine the distance in nautical miles between marks. If a distance is not shown, the course between those marks most likely crosses land and/or a shoal and should not be used.

	B	D	E	F	H	J	K	L	N	P	Q
A	0.46	0.62				0.60	0.96	4.16			
B		0.23	0.45		0.90			4.25	3.15		2.77
D			0.49		1.06			4.46	3.32		2.94
E					0.66			4.14	2.89		2.52
F								4.89	3.18	1.49	3.21
H						1.07	1.42	3.48	2.26		1.88
J							0.42	3.62	2.87		2.48
K								3.49	2.95		2.57
L									1.75	3.41	1.89
N										1.72	0.40
P											1.82